

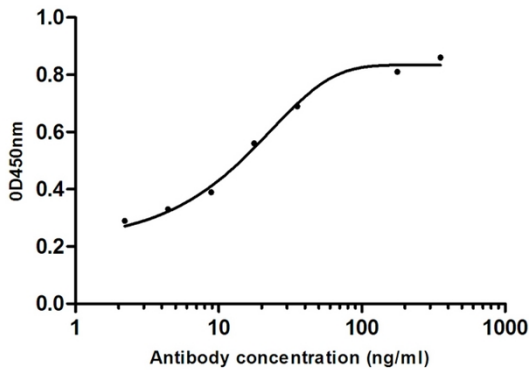


# Human IgG mouse mAb

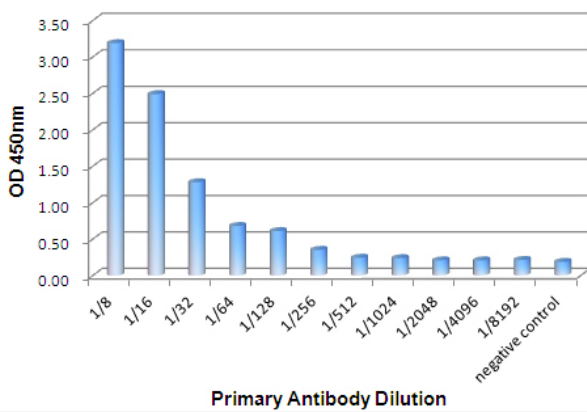
<b>Catalog No</b>	YP-Ab-04488
<b>Isotype</b>	IgG
<b>Reactivity</b>	Human
<b>Applications</b>	ELISA
<b>Gene Name</b>	human igg
<b>Protein Name</b>	
<b>Immunogen</b>	Purified recombinant human Human IgG protein fragments expressed in E.coli.
<b>Specificity</b>	This antibody detects the heavy chain of Human IgG and does not cross-react with Human IgM.
<b>Formulation</b>	Liquid in PBS containing 50% glycerol, 0.5% BSA and 0.02% sodium azide.
<b>Source</b>	Monoclonal, Mouse
<b>Purification</b>	The antibody was affinity-purified from mouse ascites by affinity-chromatography using epitope-specific immunogen.
<b>Dilution</b>	ELISA 1:10000-20000
<b>Concentration</b>	1 mg/ml
<b>Purity</b>	≥90%
<b>Storage Stability</b>	-20°C/1 year
<b>Synonyms</b>	FLJ39988; FLJ40036; FLJ40253; FLJ40587; FLJ40789; FLJ40834; G1m marker; G2m marker; G3m marker; G4m marker; HDC; Heavy chain disease protein; Human immunoglobulin G; Ig gamma 1 chain C region; Ig gamma 2 chain C region; Ig gamma 3 chain C region.
<b>Observed Band</b>	
<b>Cell Pathway</b>	
<b>Tissue Specificity</b>	
<b>Function</b>	
<b>Background</b>	
<b>matters needing attention</b>	Avoid repeated freezing and thawing!
<b>Usage suggestions</b>	This product can be used in immunological reaction related experiments. For more information, please consult technical personnel.



## Products Images



Recombinant Anthrax Protective Antigen used as Coating antigen, followed by Anti-Anthrax Protective Antigen Human antibody and then incubated with Anti-Human IgG(201068) Mouse mAb, HRP conjugated goat anti Mouse IgG was used for coloring.



Recombinant Anthrax Protective Antigen used as Coating antigen, followed by different dilutions of supernatants which includes secreted Anti-Anthrax Protective Antigen Human antibody, HRP conjugated Anti-Human IgG(201068) Mouse mAb was used for coloring.